

TORRES STRAIT PRAWN MANAGEMENT ADVISORY COMMITTEE	Meeting No. 7 2 December, 2008
REPROTS Industry report – 2008 season summary	Agenda Item No. 2.1 FOR NOTING

RECOMMENDATION

2.1 The TSPMAC **NOTES** the Industry report provided in respect to the 2008 season for the TSPF.

BACKGROUND

The TSPMAC was formed following the PZJA 19 decision to elevate the status of the prawn working group to the TSPMAC in April 2006. As a Management Advisory Committee, the TSPMAC has a responsibility to remain current in all issues involving the fishery. At times this can be difficult due to multi-agency involvement within the fishery and the spatial distribution of its members. The 2008 season is now closed (December 1st, 2008) and as such it is timely for TSPMAC members to provide a general overview of the 2008 fishing season.

DISCUSSION

The TSPMAC meetings offer an opportunity for all members to share fishery information that they have received either directly or indirectly.

Members are invited to provide further verbal information relating to the 2008 season on topics including but not limited to:

- Catch rates;
- Product quality;
- Fishery economics; and
- Bycatch rates.

TORRES STRAIT PRAWN MANAGEMENT ADVISORY COMMITTEE	Meeting No. 7 2 December, 2008
REPORTS Data report – Trends in catch and effort data, 2008	Agenda Item No. 2.2 FOR NOTING

RECOMMENDATION

2.5 The TSPMAC **NOTES** the preliminary information presented on the trends in the 2008 catch and effort data compared with earlier years.

BACKGROUND

A download of the available TSPF logbook data for 2008 was obtained from the AFMA logbook section in Mid October, 2008. This data has been analysed and the results incorporated into a PowerPoint presentation provided at **Attachment 2.5A** which Clive Turnbull will discuss. The analysis provides a pre-view of some of the information that will go into the 2009 edition of the Torres Prawn Handbook. A download of the VMS data was obtained on the 24th November which is close to the end of the season.

DISCUSSION

Based on the VMS data the effort for the season will be slightly above 4111 days which is about 700 days less than for 2007 (4,832 days) (**Attachment 2.5A**). Effort during March to May was the lowest on record at just over 500 days per month. The current effort for 2008 based on the logbook data is 2,648 and represents an estimated 65 percent coverage of the season.

The tiger prawn catch was below average through out the season due to the low effort. In contrast tiger prawn catch rates (CPUE) have been well above average indicating a high stock biomass level. The total tiger prawn harvest for 2008 will probably be lower than for 2007 due to the lowest effort on record.

In 2008 the monthly endeavour prawn catches were all well below average and slightly lower than for 2007. This reflects the low level of effort and fishers focusing their effort on the more valuable tiger prawns. The monthly catch rates (CPUE) were above average during March – April and close to but above average through to August. This indicates a slightly above average biomass for the 2008 season.

FINANCIAL IMPLICATIONS

Nil.

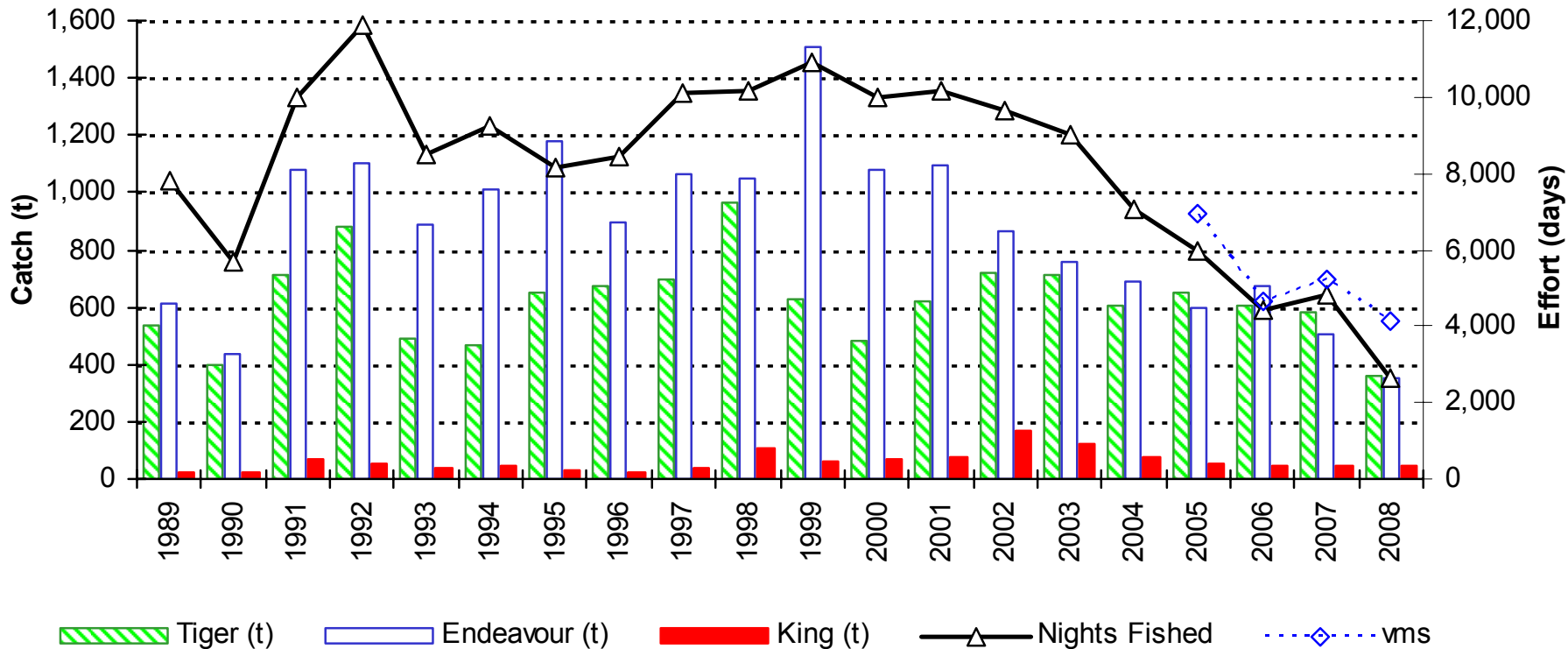
Item 2.2 Data report - Trends in catch and effort, 2008

TSPMAC 7
2nd December 2008

Clive Turnbull

DPI&F
Northern Fisheries Centre

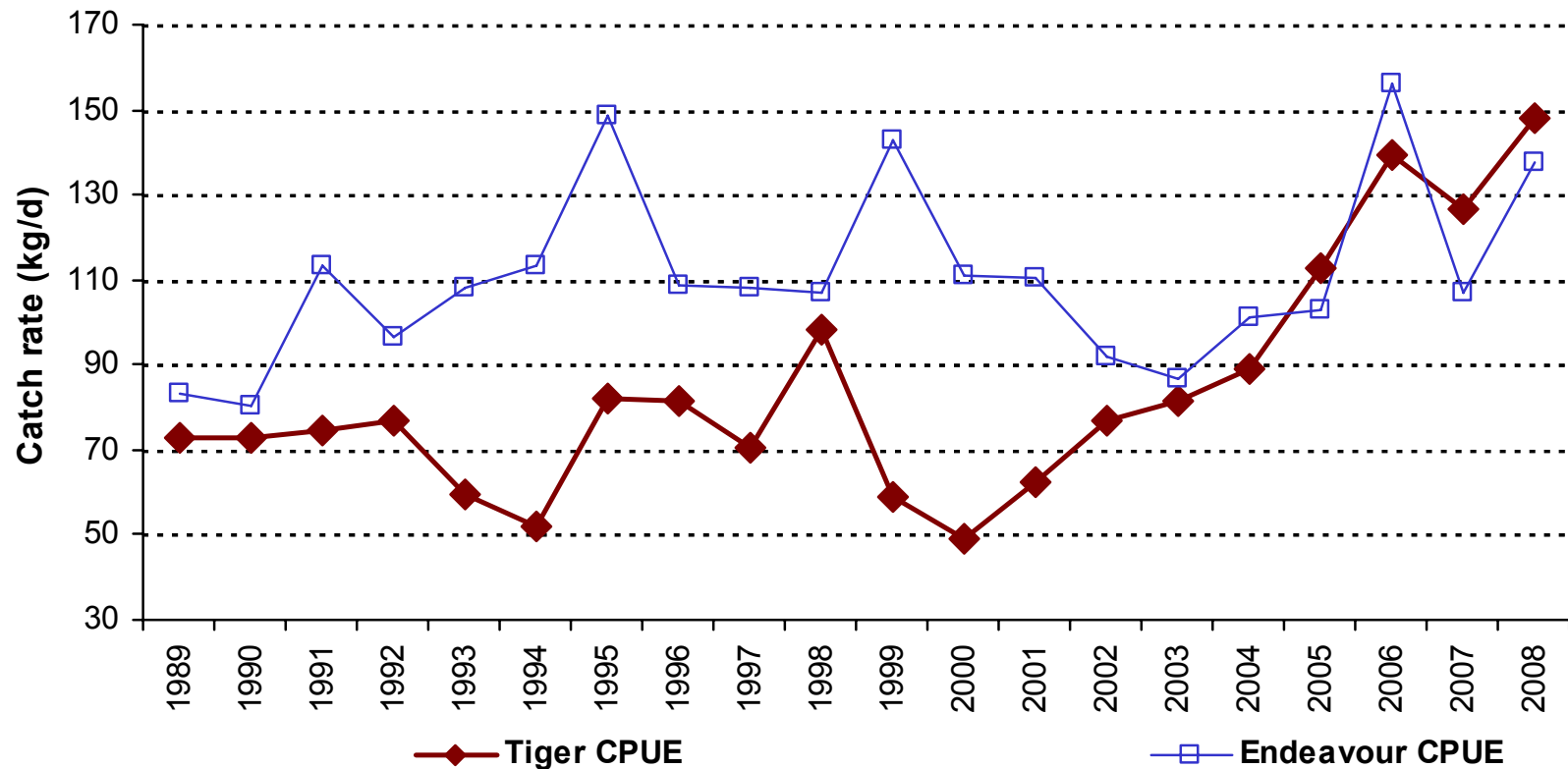
Annual catch and effort



Data up to September for 2008 ~ 65% coverage of season.

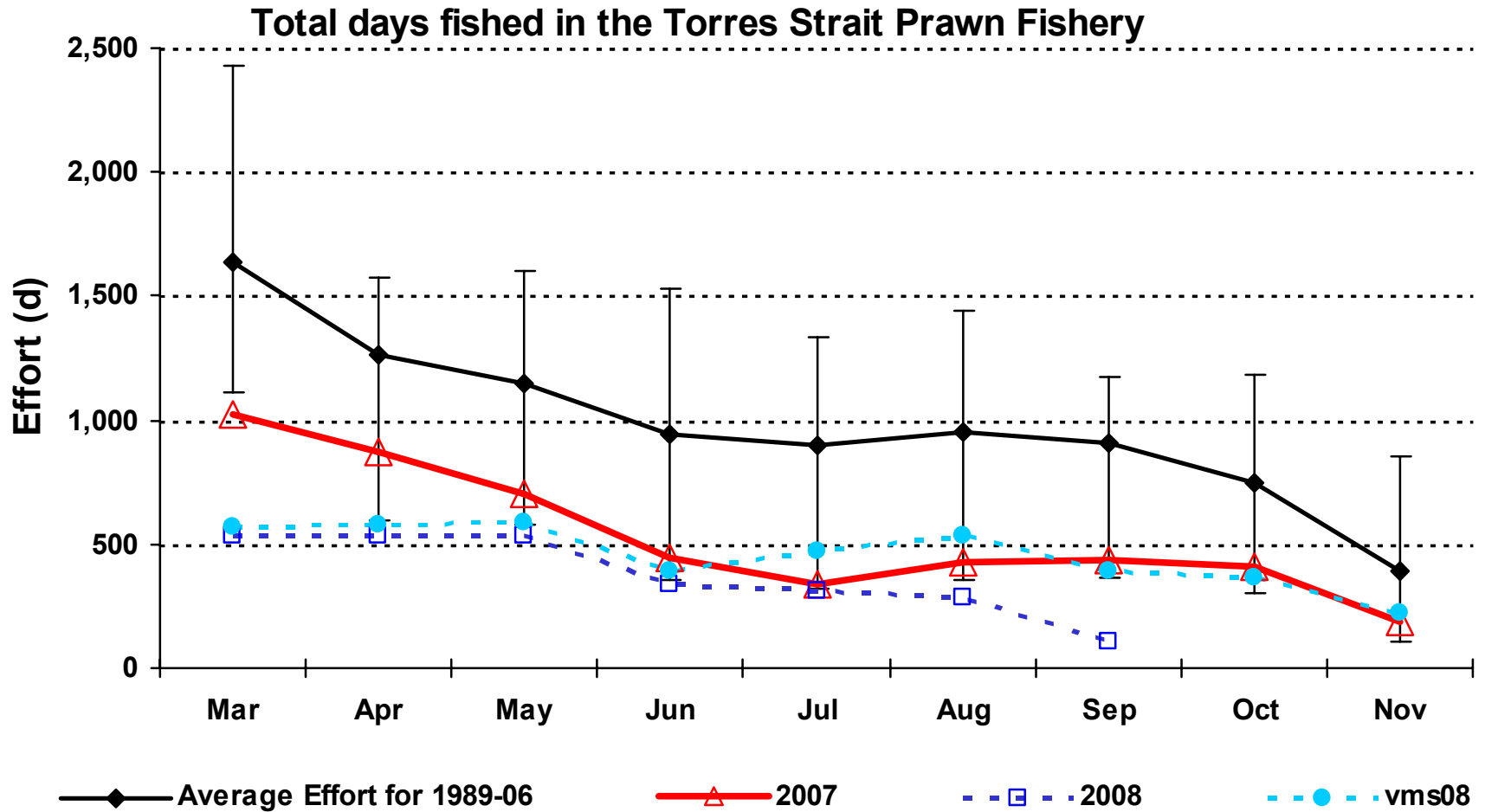
Effort 4111 (VMS), 2648 days (logbooks); tiger 360 t (avg 97-06, 668t),
endeavour 355 t (avg 938t), king 43 t, other 1.1 t

Annual catch rates (not standardised)



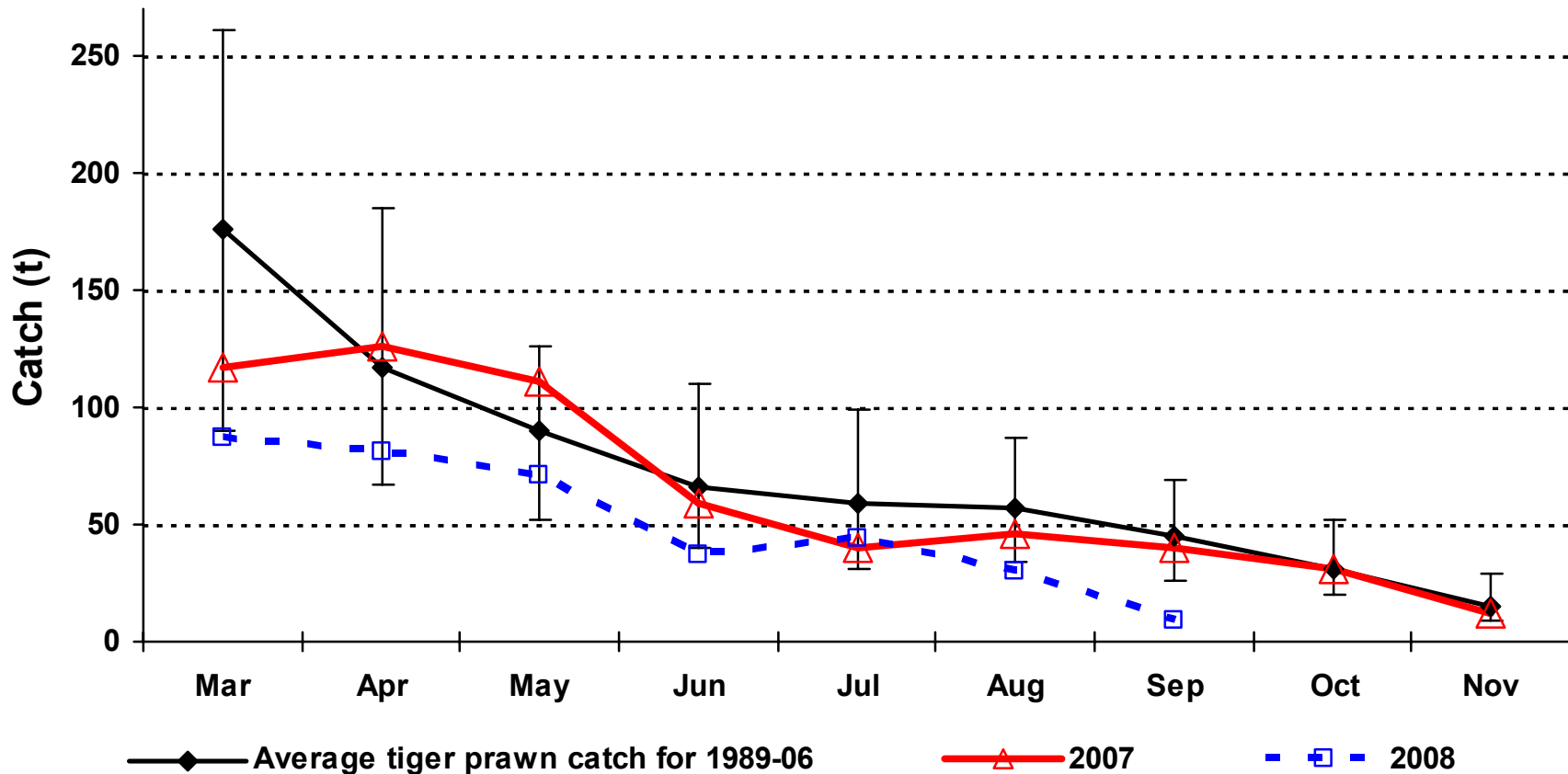
Note: The final estimates of the 2008 CPUE will probably be slightly lower as there is downward trend in the CPUE during the season.

Monthly effort

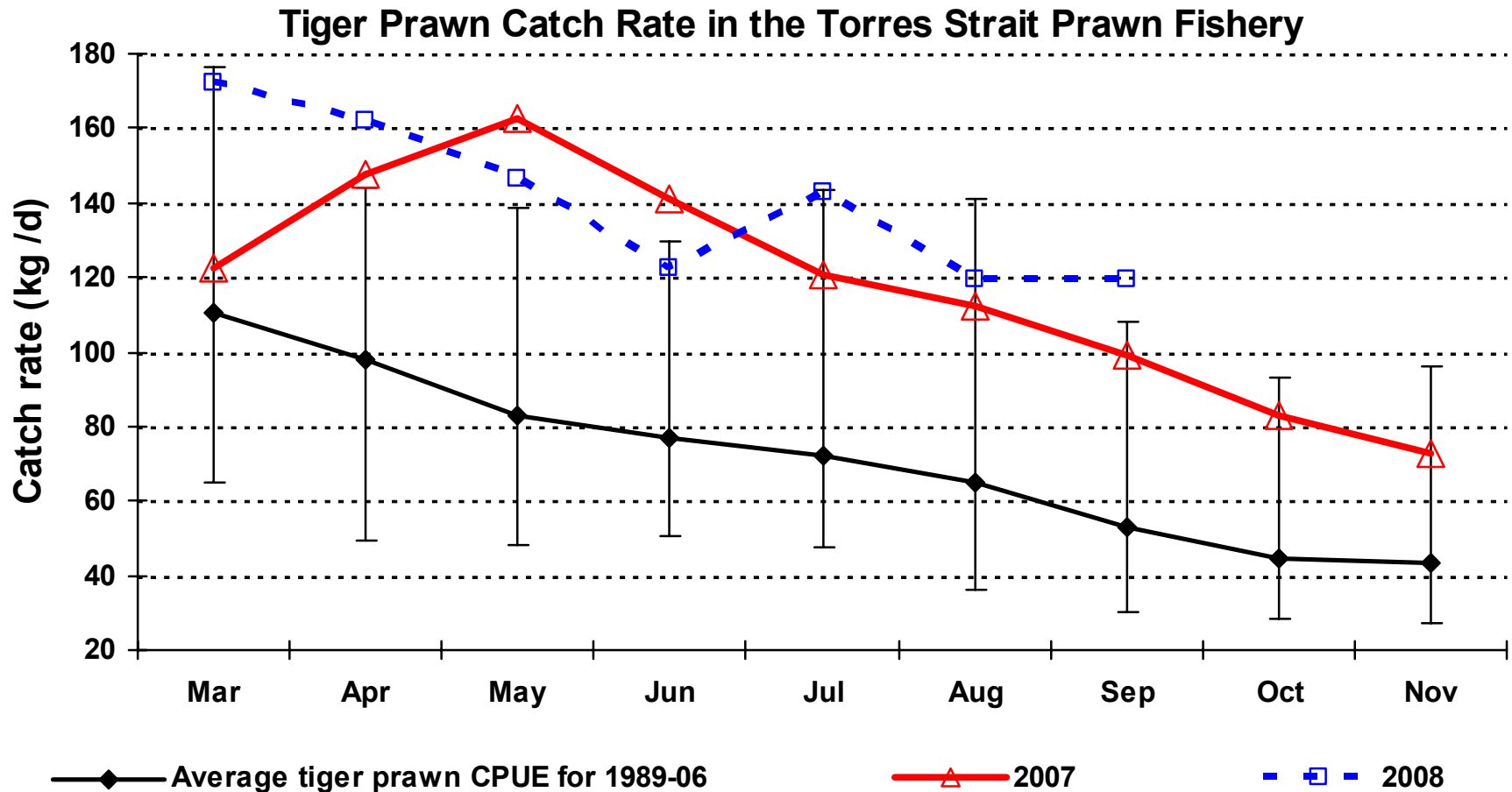


Monthly tiger prawn catch

Total catch of tiger prawns in the Torres Strait Prawn Fishery

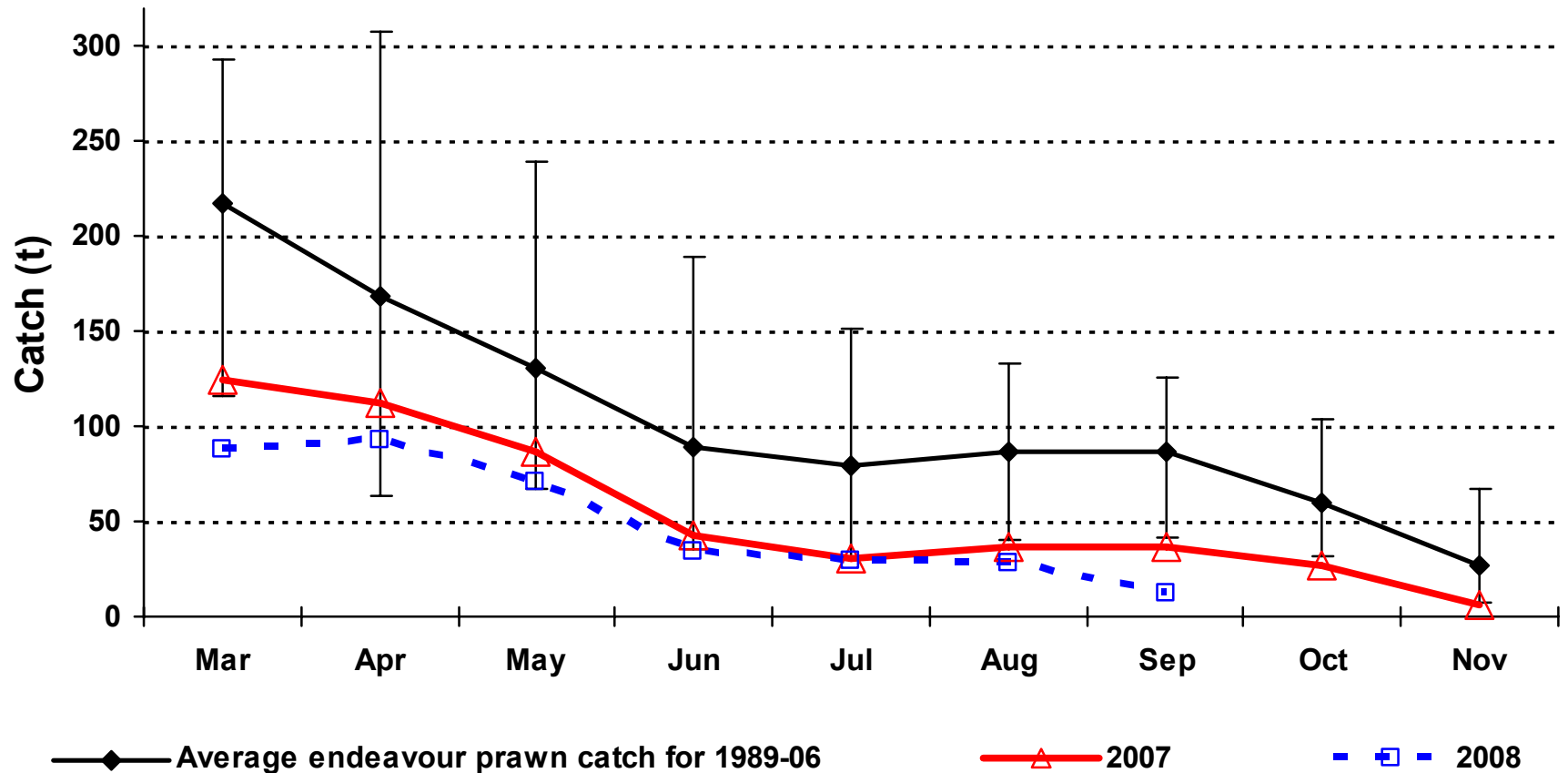


Monthly tiger prawn catch rates (CPUE)



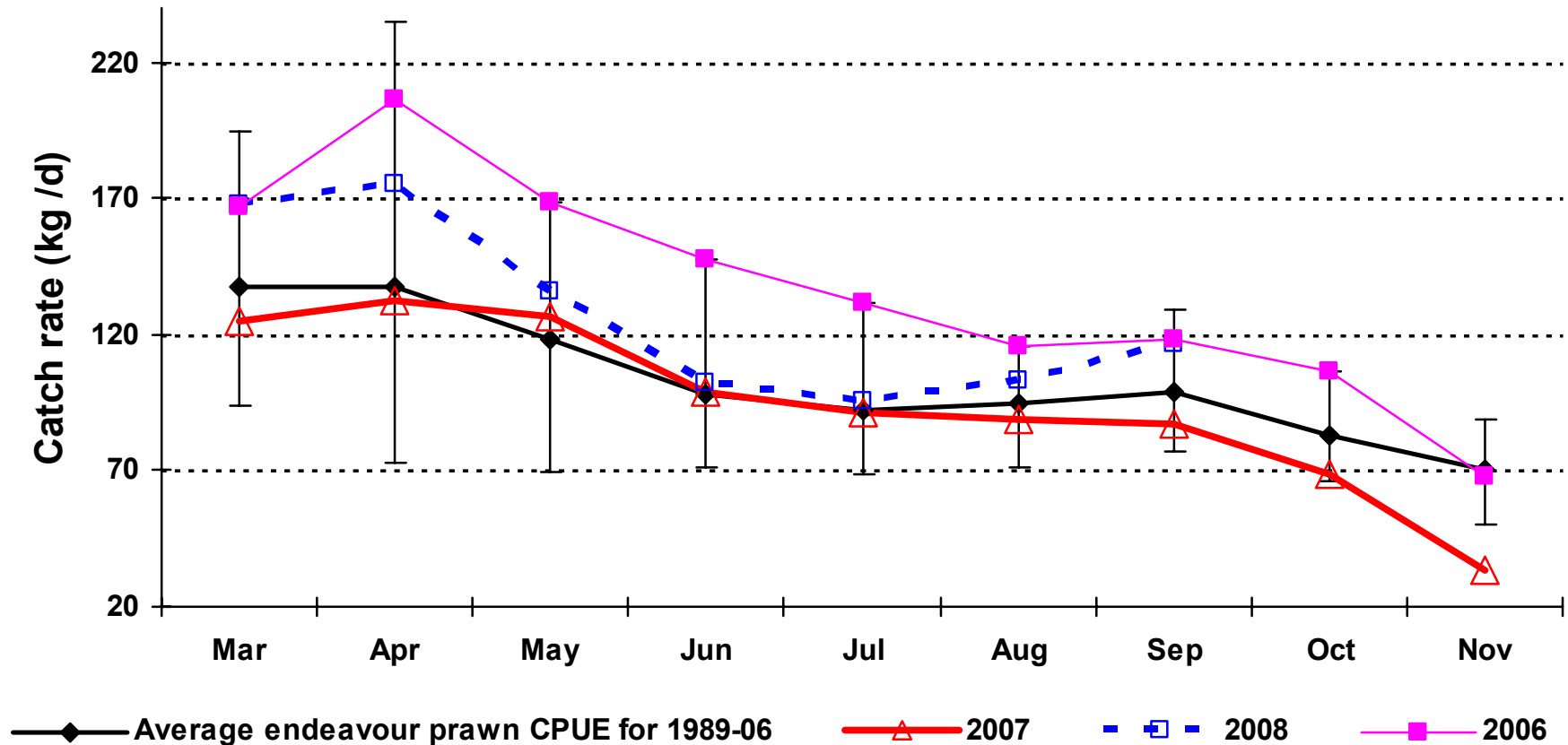
Monthly endeavour prawn catch

Total catch of endeavour prawns in the Torres Strait Prawn Fishery



Monthly endeavour prawn catch rates (CPUE)

Endeavour prawn catch rate in the Torres Strait Prawn Fishery



Summary of Catch and Effort data for 2008

- 2008 tiger prawn CPUE (unstandardised) high
 - indicating a high biomass level.
- 2008 monthly tiger prawn catches lower than for 2007
 - Indicating a lower total catch for the year than 2007.
 - Due to lower effort.
- 2008 monthly endeavour prawn catch lower than average
 - Due to low effort and fishers focusing on tiger prawns
- 2008 endeavour prawn CPUE slightly higher than average
 - Indicating a slightly above average biomass level.