

# Black teatfish opening Checklist for fishers

Start date: 23 March 2026

## BEFORE 23 March 2026

CHECK	• Your new and existing licence conditions	<input type="checkbox"/>
	• That you have a beche-de-mer (BD) entry on your licence	<input type="checkbox"/>
RENEW	Your TIB fishing licence if it has expired or is due to expire soon	<input type="checkbox"/>
UPDATE	Your contact details with AFMA:	<input type="checkbox"/>
	• mobile phone number	
	• email	
PLAN	Ahead with your licenced fish receiver – know who you are going to land to daily	<input type="checkbox"/>
NOMINATE	If required, an Authorised Agent to sign the fisher details section of the Catch Disposal Record (CDR). The same person cannot sign the fisher details section and the fish receiver section of the CDR	<input type="checkbox"/>

## DURING black teatfish opening

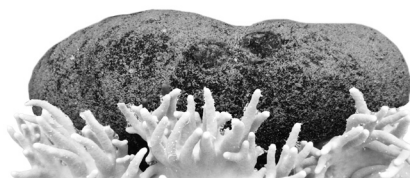
LAND CATCHES DAILY	Land your black teatfish catch to a licenced fish receiver by 11:00pm on the <b>same day</b> the catch is taken. This means <b>daily</b> . Make sure you have mobile phone reception and internet connection to receive updates from AFMA via SMS, email and <b>www.pzja.gov.au</b>	<input type="checkbox"/>
CHECK	Your mobile phone, email and <b>www.pzja.gov.au</b> for AFMA messages on: 1. Daily catch updates 2. When to stop fishing (the TAC Date <sup>#</sup> )	<input type="checkbox"/>

**AFTER TAC DATE<sup>#</sup>  
DO NOT FISH FOR BLACK TEATFISH**

<sup>#</sup> The **TAC Date** is the specific date and time that the PZJA or its delegate determines as the last day of fishing for black teatfish based on its reasonable belief that the TAC will be reached, in order to avoid an overcatch of the TAC. You cannot fish for black teatfish after the TAC Date.

# Black teatfish opening

## Rules for fishers



### Fishers MUST

- ✓ Hold a current TIB licence with a beche-de-mer (BD) entry
- ✓ Make sure that all crew are traditional inhabitants\*
- ✓ Land black teatfish catches to a licenced fish receiver by 11:00pm **on the same day** the catch is taken. This means **daily**

\*FAQs for traditional inhabitant identification verification can be found on [www.pzja.gov.au](http://www.pzja.gov.au)

### Fishers MUST NOT

- ✗ Fish for or stockpile black teatfish **before** 23 March 2026
- ✗ Use hookah gear
- ✗ Take black teatfish that are smaller than 25 centimetres (see ruler for length)
- ✗ Fish from a boat greater than 7 metres in length
- ✗ Continue to fish for black teatfish **after the TAC Date**<sup>#</sup>

### For more information, contact AFMA

#### Thursday Island Office

Phone: (07) 4069 1990

Fax: (07) 4069 1277

Email: [blackteatfish@afma.gov.au](mailto:blackteatfish@afma.gov.au)

#### AFMA Licensing

Phone: 1300 723 621

Phone: (02) 6225 5555

Email: [licensing@afma.gov.au](mailto:licensing@afma.gov.au)

**Report illegal fishing to CRIMFISH on 1800 274 634**

