



Black teatfish trial opening Checklist for Fishers



Start date: 30 April 2021
Total Allowable Catch: 20 tonnes

BEFORE 30 April 2021

CHECK	<ul style="list-style-type: none">Your new and existing licence conditionsThat you have a Beche-de-mer (BD) entry on your licence	<input type="checkbox"/> <input type="checkbox"/>
RENEW	Your TIB fishing licence if it has expired or is due to expire soon	<input type="checkbox"/>
UPDATE	Your contact details with AFMA: <ul style="list-style-type: none">mobile phone numberemail	<input type="checkbox"/>
PLAN	Ahead with your licenced fish receiver – know who you are going to land to daily	<input type="checkbox"/>
NOMINATE	If required, an authorised agent to sign the fisher details section of the catch disposal record (CDR). The same person cannot sign the fisher details section and the fish receiver section of the CDR.	<input type="checkbox"/>

DURING black teatfish season

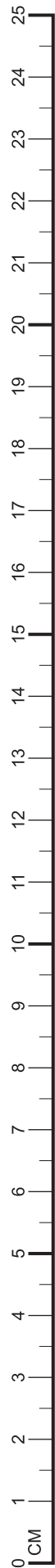
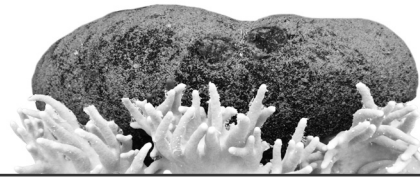
LAND CATCHES DAILY	Land your black teatfish catch to a licenced fish receiver on the same day the catch is taken. This means daily . Make sure you have mobile phone reception and internet connection to stay up to date with daily catch updates from AFMA via SMS and www.pzja.gov.au	<input type="checkbox"/>
CHECK	Your mobile phone, email and www.pzja.gov.au for AFMA messages on: 1. Daily catch update 2. When to stop fishing (the day after the TAC Date [#])	<input type="checkbox"/>

AFTER TAC DATE DO NOT FISH FOR BLACK TEATFISH

[#] The TAC Date is the day that the PZJA or its delegate determines based on its reasonable belief that the TAC will be reached. You cannot fish the day after the TAC Date.

Black teatfish trial opening

Rules for Fishers



Black teatfish minimum size = 25cm

Fishers MUST

- ✓ Hold a current TIB fishing licence with a Beche-de-mer (BD) entry.
- ✓ Make sure that all crew are traditional inhabitants*.
- ✓ Land black teatfish catches to a licenced fish receiver **on the same day** the catch is taken. This means **daily**.

* FAQs and the form for Traditional Inhabitant identification verification can be found on www.pzja.gov.au

Fishers MUST NOT

- ✗ Fish for or stockpile black teatfish **before** 30 April 2021
- ✗ Use hookah gear
- ✗ Take black teatfish that are smaller than 25 centimeters (see ruler for length)
- ✗ Fish from a boat greater than 7m in length
- ✗ Fish for black teatfish **after the TAC Date**.

For more information, contact AFMA

Thursday Island Office

Phone: (07) 4069 1990

Fax: (07) 4069 1277

Email: tistaff@afma.gov.au

AFMA Licensing

Phone: 1300 723 621

Phone: (02) 6225 5555

Email: licensing@afma.gov.au

Report illegal fishing to CRIMFISH on 1800 274 634