

Estimation of Total Annual Effort in the Torres Strait Rock Lobster Fishery - 2017 Update

Robert Campbell

CSIRO Oceans and Atmosphere Flagship

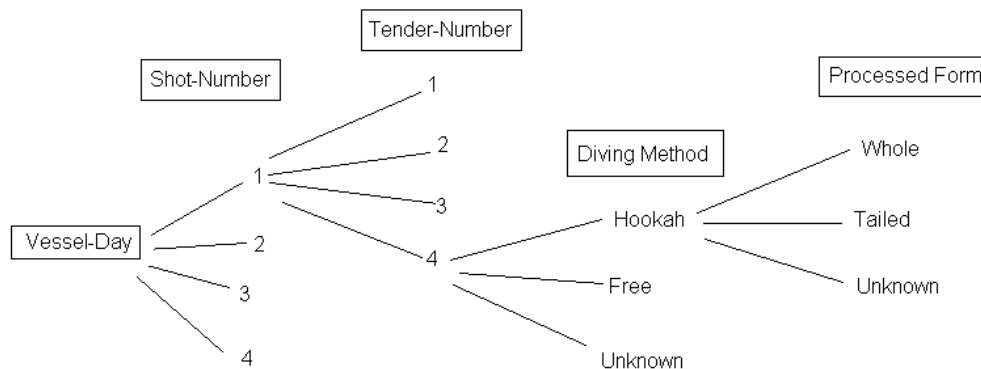
December 2017

1. TVH Fishery

1.1 Data Summary

Catch and effort data for the TVH sector of the Torres Strait rock lobster fishery is recorded in the TRL04 Logbook. The structure of the data is shown in Figure 1. For each vessel-day there can be multiple shots (up to 4) with each shot consisting of up to 8 tenders. Each tender has a catch recorded by diving method (hookah, free or unknown) and the catch is recorded by processed form (whole, tailed or unknown). The data was aggregated so that each record refers to the catch for a unique vessel-day, shot, tender and diving method (also known as a tender-set). Between 2004 and 2017 there are a total of 38,274 TVH records or tender-sets.

Figure 1. Structure of the TVH data



The distribution of these 38,274 records by year and month are given in Table 1. It is apparent that there has been little if any effort during October and January since 2004.

Effort is recorded as “Hours-Fished” which records the duration of the fishing trip for each tender-set. The distribution of hours fished for all records is shown in Figure 2. Unfortunately the fishing effort has not been completed for all tender-sets (c.f. Figure 3), with the number of hours fished recorded for only 35,871 (93.7%) of the 38,274 records. The number of recorded hours fished was between 0.15 hours and 96 hours, though the majority were less than 12 hours. Of the 337 records where the hours fished was greater than 12, most (315) recorded 24 hours which was assumed to be a day’s fishing. All records where the hours-fished was greater than 12 hours were considered suspect due to possible recording errors and as such only those records where the hours-fished was 12 hours or less were included in the analysis. A further two records where effort was less than 0.5 hours were also excluded. This left a total of 35,534 records (92.8% of all tender-sets) having a recorded effort between 0.5 and 12 hours for further analysis.

Table 1. Number of TVH tender-sets by year and month.

YEAR	JAN	FEB	MAR	APR	MAY	JUN	JUL	AUG	SEP	OCT	NOV	DEC	TOTAL
2004	24	607	712	571	662	761	729	633	395	0	0	106	5200
2005	13	662	615	543	519	538	552	533	323	0	0	4	4302
2006	0	409	436	361	286	206	349	289	92	0	0	0	2428
2007	0	288	427	446	542	489	402	184	91	0	0	0	2869
2008	0	133	222	113	161	96	159	175	152	0	0	0	1211
2009	0	148	227	174	201	200	125	163	70	0	0	0	1308
2010	0	255	333	302	324	292	309	294	253	0	6	0	2368
2011	0	286	384	371	322	380	356	310	261	0	0	0	2670
2012	0	166	344	371	311	336	318	264	201	0	0	0	2311
2013	0	461	383	414	424	324	374	385	243	0	0	0	3008
2014	0	357	404	297	433	408	445	274	291	0	1	0	2910
2015	0	419	408	441	355	313	253	357	137	0	0	0	2683
2016	12	500	444	315	379	349	323	191	141	0	0	9	2663
2017	7	397	254	322	383	310	292	277	101	0	0	0	2343
Total	56	5,088	5,593	5,041	5,302	5,002	4,986	4,329	2,751	0	7	119	38,274

Figure 2. Distribution of effort for the 38,274 TVH records between 2004 and 2017.

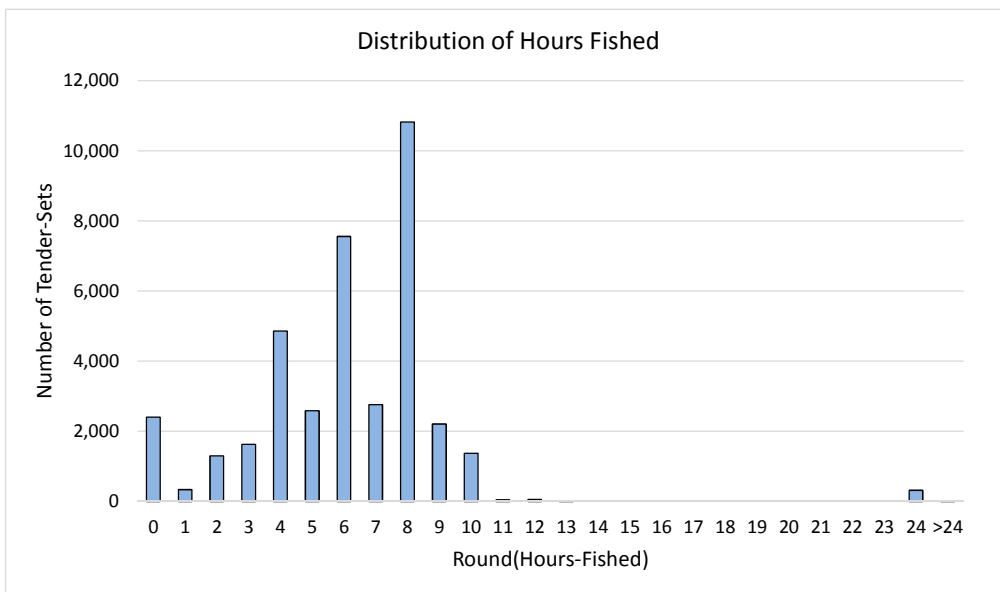


Figure 3. The total number of TVH catch records each year and the number of records for which the corresponding effort data is available. The percentage of records for which no effort is recorded is also shown (right hand axis).

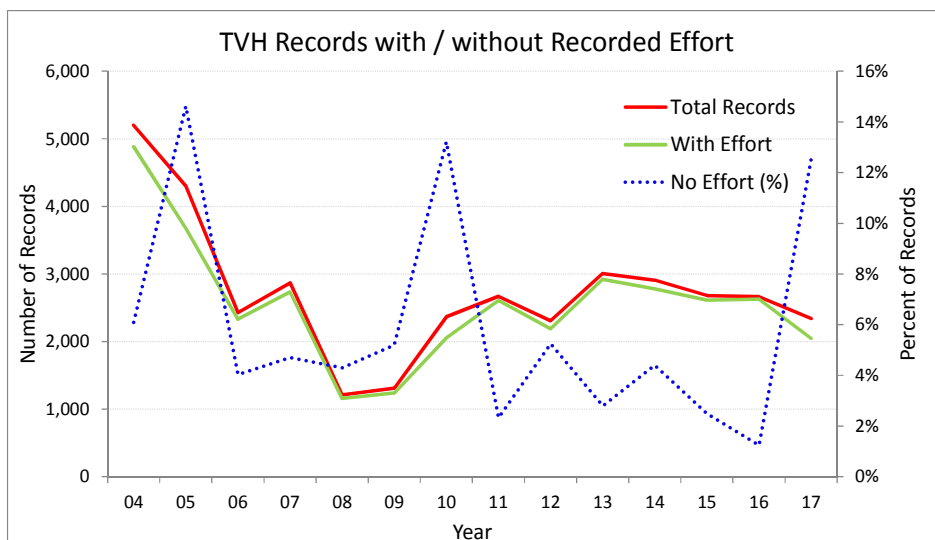
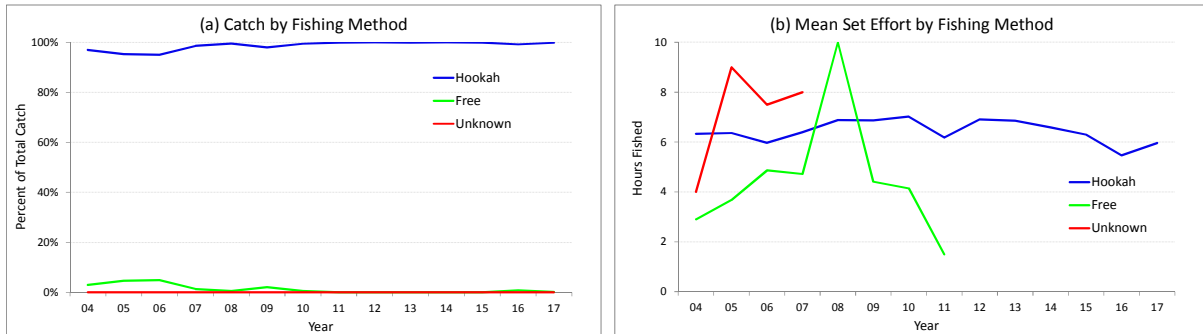


Figure 4. (a) The percent of total TVH catch each year caught by each fishing method, and (b) the mean number of hours fished per tender-set for each fishing method.



Finally, the percent of total TVH catch each year caught by each fishing method, and the mean number of hours fished per tender-set for each fishing method are shown in Figure 4.

1.2 Estimate of Annual Effort

Given the above data preparation and filtering the following process was adopted for estimating the total annual effort:

1. First, an annual listing of the number of TVH records against the number of hours fished was prepared (c.f. Table 2a, Figure 5). Records listed against zero hours fished pertain to those where the effort was either not recorded or was outside the 0.5 to 12 hour band used. The total number of tender-sets for each year is also shown in this table.
2. For those records where the hours-fished was recorded the total number of hours fished for these tender-sets was totalled. This result is shown as the Total Hours in Table 2b.
3. To account for those records where the hours-fished was not recorded, the total calculated in the previous section was adjusted as follows:

$$Total\ Hours\ (Adj) = Total\ Hours * \frac{\sum_{i=0}^{12} NumberRecords_i}{\sum_{i=1}^{12} NumberRecords_i}$$

This assumes that the distribution of hours -fished for those records where effort was not recorded is similar to the distribution of hours -fished for those records where effort was recorded. Again, for each year this result is shown as the Total Hours -Adj in Table 2b.

Table 2. Annual listing of (a) the number of TVH records against the number of hours fished. – rounded to the nearest integer, and (b) unadjusted and adjusted total number of hours fished.

(a)															
Hours-Fished	04	05	06	07	08	09	10	11	12	13	14	15	16	17	Total
0	320	631	99	138	52	68	435	205	180	88	129	68	33	294	2,740
1	61	48	37	14	15	10	10	21	5	15	21	23	32	26	338
2	188	135	102	76	24	22	36	88	40	54	75	94	183	184	1,301
3	396	286	198	100	34	66	34	58	44	87	64	73	117	70	1,627
4	607	598	354	424	129	92	215	610	263	341	201	245	525	251	4,855
5	399	231	255	282	86	120	94	145	73	170	124	457	97	53	2,586
6	727	482	445	587	128	180	389	464	326	420	970	549	1145	749	7,561
7	422	266	182	199	129	132	126	118	187	324	329	195	118	36	2,763
8	1622	1293	596	638	375	378	677	728	951	1080	744	747	390	598	10,817
9	337	251	37	267	143	127	91	70	207	318	129	186	17	32	2,212
10	69	81	123	144	94	113	261	156	30	111	95	44	5	50	1,376
11	7	0	0	0	2	0	0	1	4	0	24	1	1	0	40
12	45	0	0	0	0	0	0	6	1	0	5	1	0	0	58
Total Tender-Sets	5,200	4,302	2,428	2,869	1,211	1,308	2,368	2,670	2,311	3,008	2,910	2,683	2,663	2,343	38,274
0.5 to 12 hours	4,880	3,671	2,329	2,731	1,159	1,240	1,933	2,465	2,131	2,920	2,781	2,615	2,630	2,049	35,534
(b)															
Total Hours	30,627	22,829	13,775	17,403	7,996	8,484	13,547	15,216	14,721	19,994	18,296	16,464	14,359	12,190	225,899
Total Hours - Adj	32,636	26,752	14,361	18,282	8,355	8,949	16,595	16,481	15,964	20,597	19,145	16,892	14,539	13,939	243,486

Figure 5. Estimates of unadjusted and adjusted total number of hours fished and number of tender-sets for the TVH sector each year.

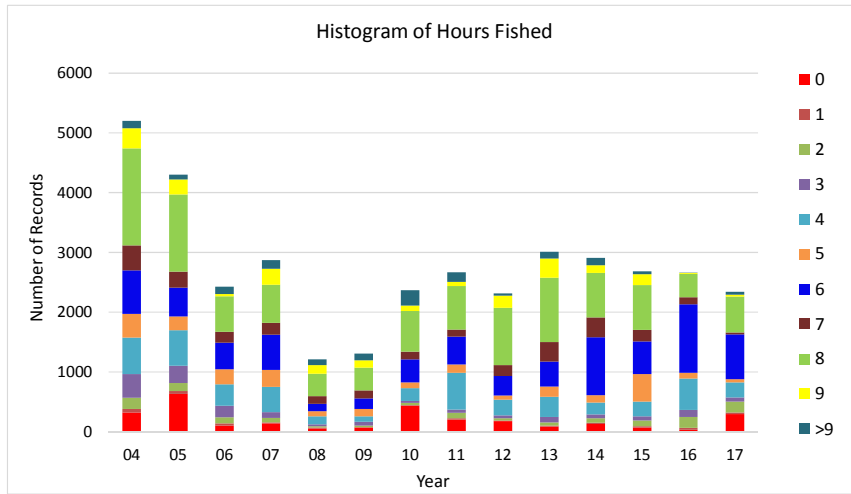
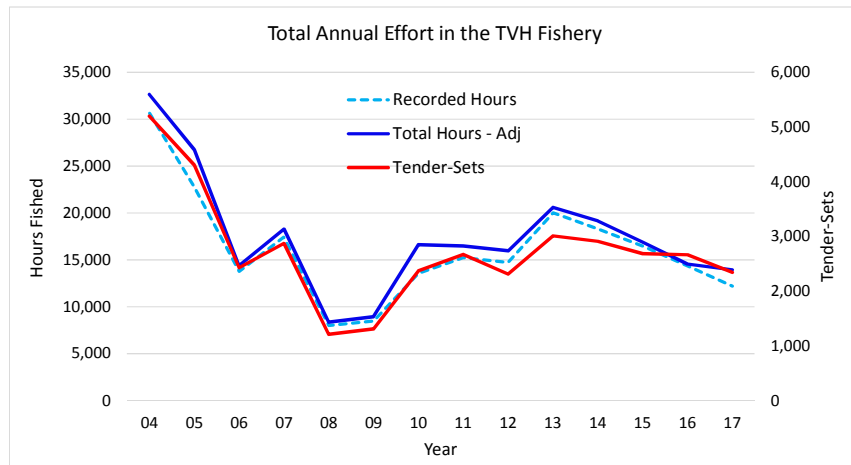


Figure 6. Estimates of TRL04 Logbook recorded and adjusted total number of hours fished and number of tender-sets for the TVH sector each year.



The results of the above process are shown in Figure 6. Note that the final adjusted effort shown for each year (Total Hours-Adj) is only an estimate as it is difficult to know how accurate the recording of this effort is in the logbook (which is understood to relate to the time away from the primary vessel). Nevertheless, the trends in both the annual effort measured in hours fished or number of tender-sets are similar.

2. TIB Fishery

2.1 Docket-book Coverage

The Buyers and Processors Docket-Book (TDB01), used in the TIB sector of the Torres Strait rock lobster fishery, records the catch sold by fishers (known as sellers on the docket-book) at the end of a fishing trip. However, unlike the logbook for the TVH sector of fishery, which requires catch and effort data to be recorded for individual fishing operations related to each vessel tender, the docket-book requires only aggregate catch and effort data to be recorded at the end of each trip. In particular, the docket-book records the transaction date, the name of the seller together with details of the catch (in weight) and the price obtained. Additional

information is also provided regarding the vessel, the number of crew, the number of days fished and the fishing methods used. This information therefore provides a measure of both the catch and effort for a given seller (or fisher) during a fishing trip.

However, there are a number of issues with the docket-book system which create problems with using this data for estimating the total catch and effort in the TIB fishery. These issues include:

- i. The requirement that completion of the docket-book is only voluntary,
- ii. The fact that catches recorded in the docket-book can also be reported elsewhere, including the TVH logbook,
- iii. The fact that processors can also record catches in the docket-book, essentially creating duplicates.

Given the duplication of catch information from both the TVH sector and processors which occurs in the docket-book data, several filters are applied to this data to remove these duplicates. Further to these issues, during some years several TIB boats only recorded their catch in the TVH-related logbook (TRL04) and these catch records need to be transferred to the TIB database. Finally, between 2013 and 2016 two processors reported aggregate annual catch data as these catches were not being recorded in the TDB01 Docket-Book. Each processor reported the catch for tailed and whole lobsters separately, so that for each year two data records were added to the Docket-Book data for each processor to account for these additional catches.

2.2 TIB Summary

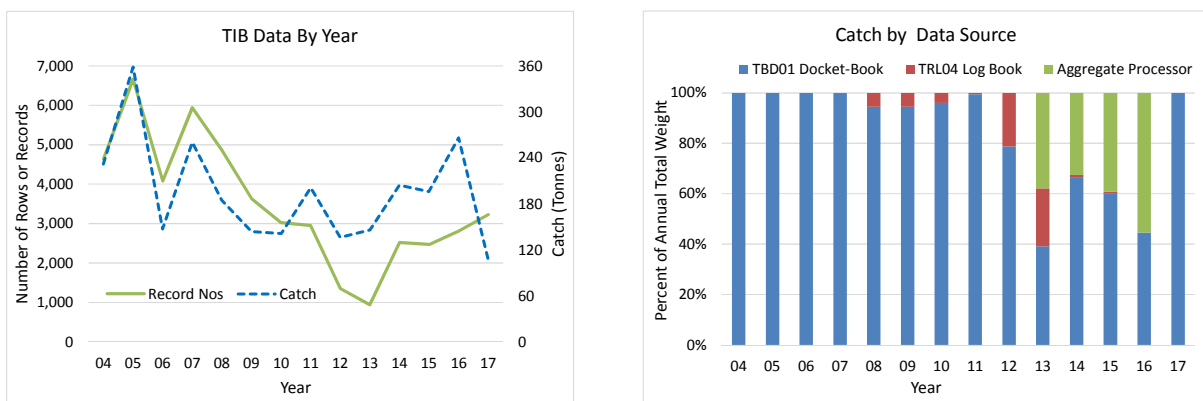
Considerable effort has gone into understanding the nature of both the TDB01 Docket-Book and TRL04 Logbook data so as to identify the catch records that should be assigned to the TIB fishery. A full description of the approach and data-rules used to identify and remove these duplicate records from the Docket-Book data is described in Campbell and Pease (2017). A total of 49,130 catch records have now been attributed to the TIB fishery covering the years 2004 to 2017. A few Docket-Book records (37) having a zero catch of lobsters are not included in this total as it is assumed that other species may have been targeted on these trips.

Table 3. Number of distinct TIB Record Nos by year and the related catch by data source. Note, PRC relates to the aggregate catch provided by several processors.

Year	Record Numbers	Catch by Data Source			Total Catch	
		TDB01	TRL04	PRC	(kg)	Tonnes
2004	4,642	232,031	0	0	232,031	232
2005	6,664	358,474	0	0	358,474	358
2006	4,082	146,946	0	0	146,946	147
2007	5,939	260,122	0	0	260,122	260
2008	4,869	174,724	10,223	0	184,947	185
2009	3,635	135,898	7,964	0	143,862	144
2010	3,024	135,517	5,686	0	141,203	141
2011	2,954	200,144	1,025	0	201,168	201
2012	1,352	107,391	29,032	0	136,423	136
2013	940	57,157	33,562	55,411	146,130	146
2014	2,521	135,450	2,456	66,662	204,568	205
2015	2,470	118,066	1,333	76,904	196,303	196
2016	2,810	118,726	0	147,380	266,106	266
2017	3,228	106,356	0	0	106,356	106
Total	49,130	2,287,000	91,283	346,357	2,724,640	2,725

The number of catch records and the associated estimate of the total catch of rock lobsters in the TIB sector each year and by data source is shown in Table 3 and Figure 6. Between 2004 and 2007 all catch is sourced from the TDB01 Docket-Book, and the number of catch records each year varied between 4,082 and 6,664. After this time, and between 2008 and 2015, a portion of the total catch attributed to the TIB sector was recorded in the TRL04 Logbook, and while the total related catch was usually small (<10 tonnes) this catch represented over 20% of the total TIB catch in both 2012 and 2013. Finally, between 2013 and 2016 a significant portion of the total TIB catch (between 33% in 2014 and 55% in 2016) was attributed to the aggregate catch data provided by several processors (as this catch was not recorded in the Docket-Book). Whether or not other catches were also not been recorded in the Docket-Book during these or in other years remains unknown.

Figure 6. Number of TIB data rows, distinct TIB Record Numbers, and associated catch (in tonnes) per year.



2.3 Data Preparation

The catch and effort information recorded in the TDB01 Docket-Book is associated with a unique Record-No (i.e. the corresponding record number of the page in either the TDB01 Docket-Book or TRL04 Logbook on which the catch and effort data is recorded). While there are usually multiple catch records associated with a given Record-No (given that the catch is separately recorded by process form and perhaps grade), the structure of the docket-book would seem to indicate that there should be a unique Record-No for each vessel, date and seller-name. However, investigation of the data indicates that there are often multiple Record-Nos associated for a given vessel, date and seller-name. The reason for these multiple records remains unknown, but is likely to be due to mis-recording of the date (and possibly other data fields). Whatever the reason, for the following analysis it was assumed that the multiple records for some vessel, date and seller-names is due to the mis-reporting of the date, and that each Record-No indeed pertains to a separate trip for each seller.

Unlike the TVH data where the measure of effort is hours-fished, the measure of effort recorded in the Docket-Book data is coarser, being days-fished. Furthermore, and as noted above, it has been assumed that each Record-No relates to the catch and effort of a single fisher (or seller) during a given trip, i.e. it is assumed that the measure of effort (days fished) associated with each Record-No also pertains to the actual effort expended by that seller in obtaining the recorded catch.

For the TIB attributed catch not-recorded in the Docket-Book there is no corresponding effort information in days fished. However, the TRL04 Logbook allows for fishing effort to be

recorded as the number of hours fished. For the 713 records attributed to the TIB sector the hours fished varied between 1 and 11 with a mode at 6 hours (43% of records). If one considers these fishing efforts correspond to a single day's fishing then one could set the effort equal to one day for all these 713 records. However, a comparison of the annual CPUE (kg/day) between these logbook records with the CPUE for records in the Docket-Book (where days-fished is also 1) indicates that the former are, on average, three times higher. This indicates that the nature of the operations for these larger TIB vessels is substantially different from those of the typical TIB vessel. The example, more than one tender is often associated with each catch Record for the larger vessels recording their catch on the TRL04 Logbook. As such, for the following analysis the effort for these Records was assumed to remain unknown. Similarly, the number of days fished to attribute to the aggregate annual catch data provided by the processors also remains unknown.

2.4 Estimate of Annual Effort

As with the TVH data, in order to account for the under-reporting of effort relating to all trips in the TIB database, the following process was adopted for estimating the total annual effort:

1. First, an annual listing of the number of 48,441 TIB Records included in the TDB01 Docket-Book against the number of days fished was prepared (c.f. Table 5). Note: trips of duration greater than 2-3 days have been recorded and whether these are correct remains uncertain. The associated histogram of the number of days fished is shown in Figure 7.
2. For the 42,860 Records where the days-fished has been recorded the total number of days fished was calculated as follows:

$$Total\ Days = \sum_{i=1}^{16} Number_Records_i * Days_Fished_i$$

For each year this result is shown as the Total Days in Table 5b.

3. To account for the 5,581 Docket-Book Records where the days-fished had not been recorded, the total calculated in the previous section was adjusted as follows:

$$Total\ Days\ (Adj1) = Total\ Days * \frac{\sum_{i=0}^{16} Number_Records_i}{\sum_{i=1}^{16} Number_Records_i}$$

This assumes that the distribution of days-fished for those Records where effort was not recorded is similar to the distribution of days-fished for those Records where effort was recorded. Again, for each year this result is shown as the Total Days-Adj1 in Table 5b.

4. Finally, to account to the effort associated with those catches which had not been recorded in the TDB01 Docket-Book (i.e. those catches recorded in the TRL04 Logbook or provided in aggregate form for some years by processors), a final estimate of the total number of days fished each year was calculated as follows:

$$Total\ Days\ (Adj2) = Total\ Days(Adj1) * \frac{Total\ TIB\ Catch}{Effort\ Associated\ Catch}$$

where *Effort Associated Catch* relates to the total catch pertaining to the 48,441 Docket-Book Records included in Step 1. Again, this assumes that for catches not recorded in the Docket-Book the relationship between catch and effort is similar to those catches recorded in the Docket-Book. The result is shown as the Total Days-Adj2 in Table 5b.

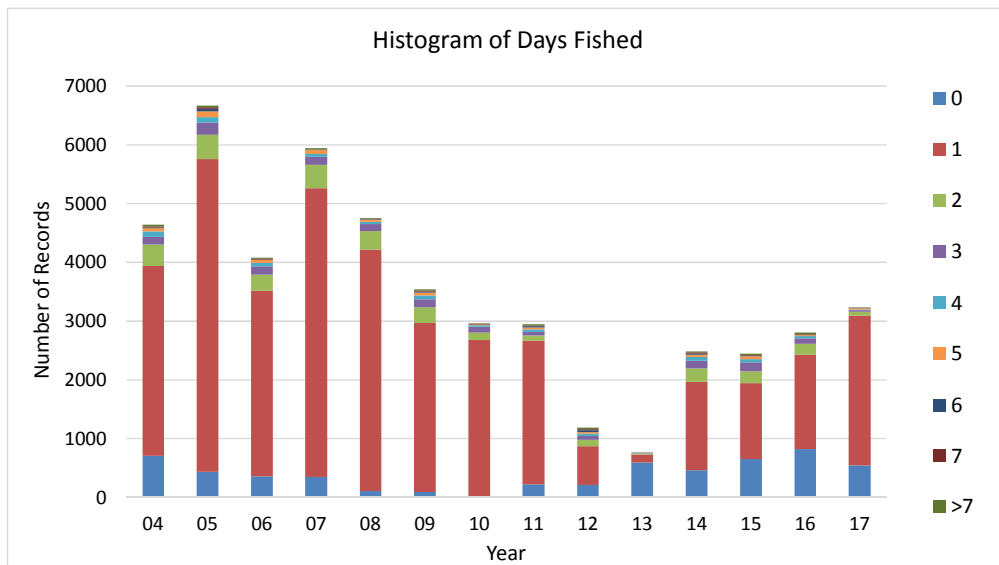
Table 5. (a) Annual listing of the number of Docket-Book Records against the number of days fished. (b). Unadjusted and adjusted total number of days fished each year.

Days-Fished	04	05	06	07	08	09	10	11	12	13	14	15	16	17	Total
0	708	436	363	349	106	92	14	223	210	596	466	654	820	544	5,581
1	3227	5321	3156	4914	4107	2876	2663	2445	661	131	1503	1290	1612	2549	36,455
2	368	417	269	398	320	271	127	86	108	19	222	201	182	64	3,052
3	130	202	145	134	121	134	99	61	64	6	131	150	95	30	1,502
4	91	96	61	48	39	65	30	44	41	6	68	58	35	13	695
5	56	98	52	67	37	52	11	32	25	3	40	49	14	17	553
6	13	41	3	5	8	13	3	23	36	2	12	12	11	4	186
7	13	26	15	6	9	17	11	11	16	0	24	11	10	5	174
8	12	10	9	8	4	5	2	7	10	0	15	8	5	0	95
9	13	5	1	2	0	0	0	3	5	0	6	10	22	2	69
10	2	5	3	3	1	7	1	8	2	0	0	0	0	0	32
11	3	0	0	0	3	5	1	1	7	0	0	0	0	0	20
12	0	5	0	1	0	2	0	0	0	0	0	0	0	0	8
13	4	1	1	2	0	0	0	0	0	0	0	0	0	0	8
14	2	1	1	1	0	0	0	1	0	0	0	0	0	0	6
15	0	0	0	1	0	1	0	0	0	0	0	0	0	0	2
16	0	0	3	0	0	0	0	0	0	0	0	0	0	0	3
Total Records	4,642	6,664	4,082	5,939	4,755	3,540	2,962	2,945	1,185	763	2,487	2,443	2,806	3,228	48,441

(b)

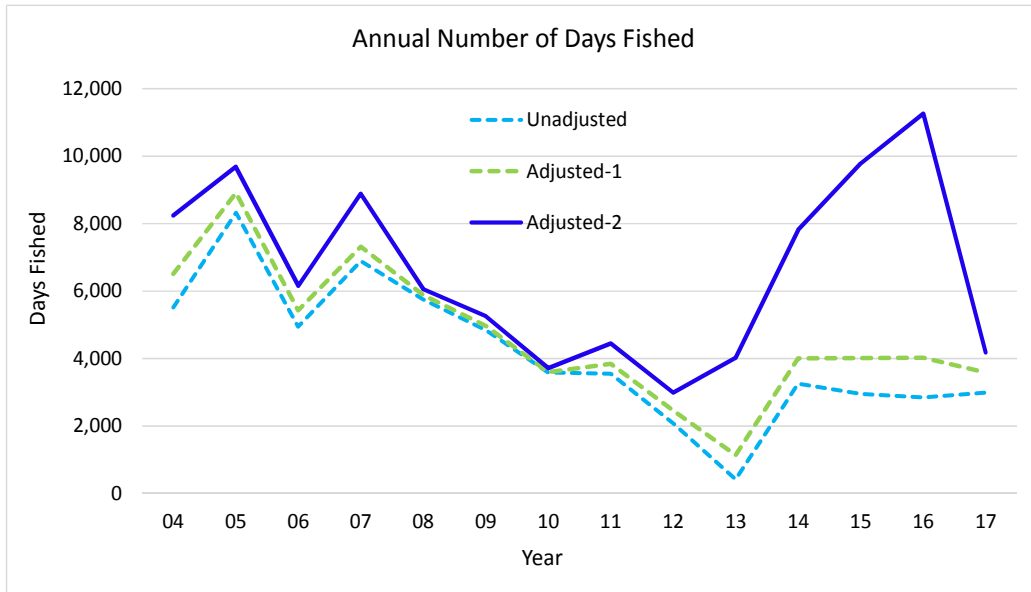
Total Days	5,512	8,325	4,942	6,890	5,637	4,741	3,521	3,539	1,908	238	3,226	2,922	2,845	2,981	57,227
Total Days - Adj1	6,504	8,908	5,424	7,320	5,766	4,868	3,538	3,829	2,319	1,087	3,970	3,990	4,020	3,585	65,127
Associated Catch	232,031	358,474	146,946	260,122	174,724	135,898	135,517	200,144	107,391	57,157	135,450	118,066	118,726	106,356	2,287,002
Total Catch	232,031	358,474	146,946	260,122	184,947	143,862	141,203	201,168	136,423	146,130	204,568	196,303	266,106	106,356	2,724,639
Total Days -Adj2	6,504	8,908	5,424	7,320	6,103	5,153	3,686	3,849	2,946	2,780	5,996	6,634	9,009	3,585	77,897

Figure 7. Histogram of the number of days fished for TIB related records.



The results of the above analyses are shown in Figure 8. Note that the final adjusted effort shown for each year (Total Days-Adj2) is only an estimate and it is difficult to know how accurate this estimate is for each year. For example, the relatively low effort estimate for 2013 is no doubt influenced by the small amount of data available for that year – only 167 Docket-Book records had effort recorded, while the high effort estimate for 2016 is influenced by the high proportion (55%) of the catch provided in aggregate form (again for which no effort information was available). Finally, the time-series of annual effort is premised on the total TIB catch data being adequately captured by various formats (TDB01 Docket-book, TRL04 Logbook, processors) and if this data is not complete given the caveats on the data mentioned previously then this this will impact on the annual estimate of total effort.

Figure 8. Estimates of unadjusted and adjusted total number of days fished each year in the TIB sector.



References

Campbell, R.A., Pease, D. 2017. Separating TIB, TVH and Processor catch records from Docket-Book Data. Report to AFMA – 2017 Update. Information paper to be presented to the 21st meeting of the Torres Strait Rock Lobster Resource Assessment Group, held 12-13 December 2017, Cairns.

Appendix A. Annual Catch-Per-Unit-Effort

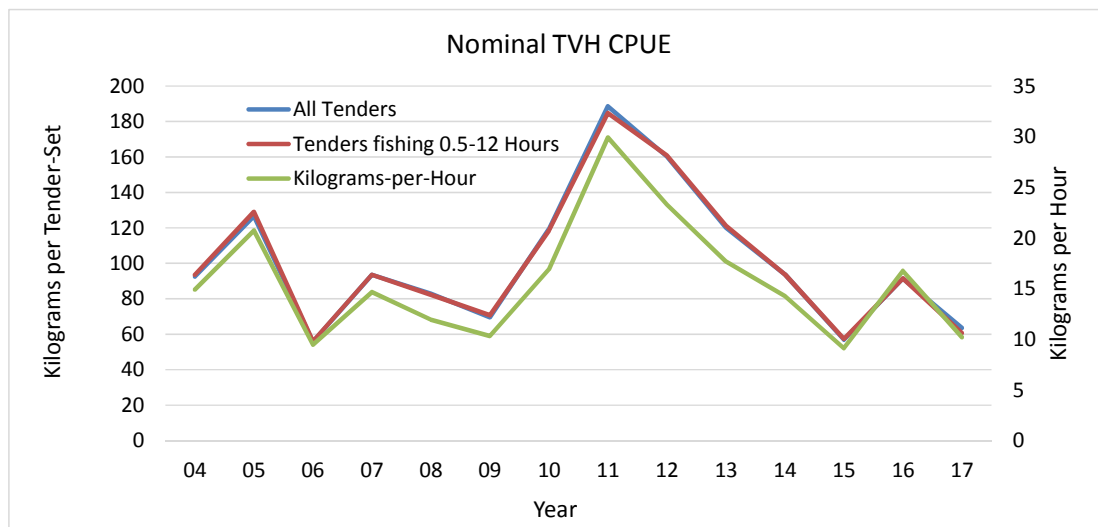
A. TVH Sector

Effort in the TVH-sector is recorded as hours fished by a tender during each set. As indicated in Table 2 the hours fished for the majority of tender sets (93.2%) are between 0.5 and 12 hours, while the hours fished is not recorded for 6.8% of tender sets. The effort recorded for the remainder of tender sets (<0.5 or >12 hours) is considered not reliable. The annual total number of tender sets, associated catch and corresponding catch-per-unit-effort (CPUE) for (a) all tender-sets and (b) those where effort is between 0.5 and 12 hours is listed in Table A1 while the CPUE for each of the data sets is displayed in Figure A1.

Table A1. (a) Annual total number of tender-sets, associated catch (kilograms) and corresponding CPUE (kilograms per tender-set) for all TVH tender sets, and (b) annual total number of tender-sets, associated hours fished and catch (kilograms) and corresponding CPUE (kilograms per tender-set) and kilograms per hour fished for TVH tender sets where effort is between 0.5 and 12 hours.

Year	(a) All Sets			(b) Sets fishing 0.5-12 Hours				
	N-sets	Catch	CPUE	N-sets	Hours	Catch	CPUE	Kg/hour
04	5,200	481,118	92.5	4,880	30,627	456,700	93.6	14.9
05	4,302	544,977	126.7	3,671	22,829	473,774	129.1	20.8
06	2,428	135,448	55.8	2,329	13,775	130,533	56.0	9.5
07	2,869	268,596	93.6	2,731	17,403	255,468	93.5	14.7
08	1,211	100,438	82.9	1,159	7,996	95,452	82.4	11.9
09	1,308	91,061	69.6	1,240	8,484	87,696	70.7	10.3
10	2,368	282,614	119.3	1,933	13,547	229,162	118.6	16.9
11	2,670	503,533	188.6	2,465	15,216	455,579	184.8	29.9
12	2,311	370,482	160.3	2,131	14,721	342,986	161.0	23.3
13	3,008	361,661	120.2	2,920	19,994	353,786	121.2	17.7
14	2,910	273,186	93.9	2,781	18,296	261,091	93.9	14.3
15	2,683	152,709	56.9	2,615	16,464	150,147	57.4	9.1
16	2,663	243,700	91.5	2,630	14,359	240,919	91.6	16.8
17	2,343	149,048	63.6	2,049	12,190	124,453	60.7	10.2

Figure A1. Annual CPUE (kilograms per tender-set and kilograms per hour) for (a) all TVH tender sets and (b) tender sets where effort is between 0.5 and 12 hours.



B. TIB Sector

Effort in the TIB-sector is recorded as the length of each fishing trip in days fished. As indicated in Table 5 fishing trips of up to 16 days have been recorded in the TIB docket-book, though the majority of trips (75.3%) are recorded as having a length of only one day. Whether or not the effort for trips having a long duration is recorded correctly remains unknown. The annual total number of days fished, associated catch and corresponding catch-per-unit-effort (CPUE) for trips having a duration of (a) 1-8 days, (b) 1-3 days and (c) 1 day only is listed in Table A2 while the CPUE (kilograms per day) for each of the data sets is displayed in Figure A2. For comparison, the CPUE associated with the Total Catch and estimated Total Days-Adj2 calculated for all TIB records in Table 5b is also displayed.

Table A2. Annual total number of days fished, associated catch (kilograms) and corresponding catch-per-unit-effort (kilograms per day) for TIB trips having a duration of (a) 1-8 days, (b) 1-3 days and (c) 1 day only. The CPUE in the column All Data relates to that associated with the Total Catch and estimated Total Days-Adj2 calculated for all TIB records in Table 5b.

Year	Year	Trips 1 to 8 days			Trips 1 to 3 days			Trips 1 day only			All Data CPUE
		Days	Catch	CPUE	Days	Catch	CPUE	Days	Catch	CPUE	
04	2004	5,262	175,421	33.3	4,353	148,401	34.1	3,227	107,050	33.2	35.7
05	2005	8,143	326,697	40.1	6,761	267,151	39.5	5,321	211,921	39.8	40.2
06	2006	4,828	127,871	26.5	4,129	115,234	27.9	3,156	87,207	27.6	27.1
07	2007	6,775	212,975	31.4	6,112	196,568	32.2	4,914	156,029	31.8	35.5
08	2008	5,594	168,762	30.2	5,110	159,778	31.3	4,107	126,709	30.9	30.3
09	2009	4,577	125,212	27.4	3,820	112,873	29.5	2,876	88,752	30.9	27.9
10	2010	3,500	130,459	37.3	3,214	124,419	38.7	2,663	104,727	39.3	38.3
11	2011	3,407	167,874	49.3	2,800	141,000	50.4	2,445	125,941	51.5	52.3
12	2012	1,766	77,810	44.1	1,069	44,020	41.2	661	24,063	36.4	46.3
13	2013	238	7,670	32.2	187	6,071	32.5	131	4,656	35.5	52.6
14	2014	3,172	100,773	31.8	2,340	72,013	30.8	1,503	52,826	35.1	34.1
15	2015	2,832	75,914	26.8	2,142	58,596	27.4	1,290	43,011	33.3	29.6
16	2016	2647	89312	33.7	2261	77859	34.4	1612	67427	41.8	29.5
17	2017	2,963	89,818	30.3	2,767	85,723	31.0	2,549	79,995	31.4	29.7

Figure A2. Annual CPUE (kilograms per day) for TIB trips having a duration of (a) 1-8 days, (b) 1-3 days and (c) 1 day only, together with the estimated CPUE for All Data records.

